



PHOTOS: MATTEO CARCELLI

Tuve Hotel Design Systems

Offering a retreat from the hectic movement of the nearby central business district, the Tuve Hotel in Hong Kong is equally tranquil and enigmatic. Evading associations with the term 'luxury', Design Systems opted instead for what the team describes as 'refinement', conceiving the space as both a physical and psychological journey.

The design employs more common materials to evade the distraction of superficial lustre – brass countertops, steel ceilings, oak, concrete and wired-glass walls – mixed with frosted plastic in the ground-floor restaurant. Some metal surfaces are even deliberately left to oxidise, adopting new patterns over time and complementing the rugged craftsmanship of the visible detailing, all bespoke and handmade by the studio. One major exception is the lush white marble floor, but even in this case the designers were concerned with how the veining would interplay with the array of silhouettes cast by the striped partitions.

The boutique hotel's guests enter through a Romanesque arch and proceed through a sequence of sequestered corridors minimally-lit by LED skirting. The upper guest rooms are the climax of this phantasmagoria. Here, a mysterious box awaits the occupant in a space that seems oddly empty, yet unfolds into the remaining furnishings of the room – a desk and a cabinet housing a whole host of accessories.

ABOVE Backlit by natural light, the sporadically perforated layered grill dazzles in the cold austerity of the lobby.

RIGHT The monochromatic foyer's geometric dance of light and shadow spills across the marble floor.

WHERE
Hong Kong, Hong Kong

OPENING
2015

CLIENT
Tuve

DESIGNER
Design Systems (p.000)

FLOOR AREA
4030 m²

NUMBER OF ROOMS
66

FACILITIES
Silver Room restaurant,
computer room



A grid-like wall system gives regular structure and adds rhythm to the neat geometry of the restaurant interior.



ABOVE The moulded light well and the precast concrete desk in the guest rooms are some of the details of craftsmanship.

RIGHT A tonal inversion of the public space, this room is dominated by warm oak panelling and interspersed with chrome detailing.

*The design employs more **common materials** to evade the distraction of superficial lustre*





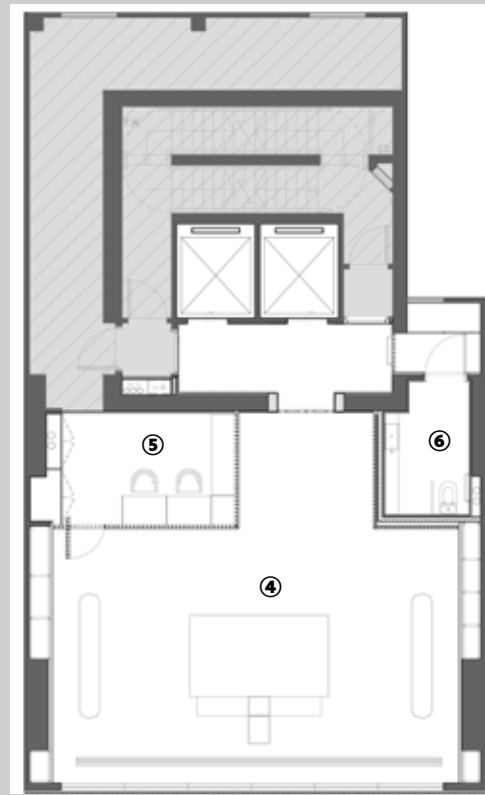
LEFT Wash rooms lined with granite continue the connection to patterns and layers.

BELOW The flow of the molten tin around the wooden parts emphasises their natural profile in the intercom panel, become a natural imprint of patterns.



GROUND FLOOR (ENTRANCE AND RESTAURANT) AND UPPER FLOOR (LOBBY) PLANS

- 1 → Entranceway
- 2 → Restaurant
- 3 → Kitchen
- 4 → Reception
- 5 → Computer room
- 6 → Lavatory



Side-by-side exchanges are encouraged with the metallic detailing of the countertop, which is designed to be emphasised by human touch and to gradually gain a natural imprint of patterns.



CONCEPT SKETCHES BY ZHENG, JINGLU JADA



The entrance is marked archetypally by a steel gate.



The unfolding box element is the most explicit expression of the studio's intention to create a 'ritual of disclosure'.

*Guests are treated to a sequence of **tranquil and enigmatic** spaces*